

City of Marion Environmental Sustainability Plan

2026-2030



Contents

Mayor's message	5
Executive summary	6
Introduction	7
Our role	8
Community priorities	8
Guiding principles	9
Our Strategic Planning Framework	10
Our partners and stakeholders	11
Implementation, monitoring and reporting	11
Theme one: Greening, trees and biodiversity	12
Background	12
Strategic alignment and targets	14
Current activities	16
Expand and improve council's natural assets	18
Advocate for trees, greening and biodiversity in the community	19
Enhance regional biodiversity and greening	20
Theme 2: Water and coastal management	21
Background	21
Strategic alignment and targets	26
Current activities	28
Protect and enhance our water catchments and coast	29
Conserve water, diversify our water sources and create water sensitive council facilities	30
Promote the establishment of a water sensitive city	31

Theme 3: Waste reduction and circular economy	32
Background	32
Strategic alignment and targets	35
Current activities	37
Develop circular council operations	39
Encourage our community to reduce waste	40
Support circular businesses and product stewardship	41
Prevention of litter and pollution	42
Theme 4: Climate resilience and reducing emissions	43
Background	43
Strategic alignment and targets	47
Current activities	49
Reduce greenhouse gas emissions from our operations	51
Reduce emissions in our supply chain	52
Support our community to reduce their emissions	53
Build our organisation’s resilience to climate change	54
Foster community resilience to climate change	55
Theme 5: Sustainable living and environmental engagement	56
Background	56
Strategic alignment and targets	58
Current activities	59
Foster sustainable communities	61
Connect our community with nature	62
Support community gardening and sustainable food systems	63
Support and promote community leadership in sustainability	64
Definitions	65
Appendix one – Emissions Inventory Summary	69
Endnotes	71



Kurna Acknowledgement

Ngadlu tampinhi Kurna meyunna yaitya mathanya yaintya yerta

This Kurna acknowledgement was prepared in consultation with traditional custodians.

Acknowledgement of Country

The City of Marion acknowledges we are situated on the traditional lands of the Kurna people and recognises the Kurna people as the traditional custodians of the land.



Gavin Malone, Sherry Rankin, and Margaret Worth, 'Tjilbruke Gateway', 1997, Warriparinga, Warriparinga Way, Bedford Park, photo by Sam Oster



Mayor's message

Marion Council has a great record of caring for its environment. From greening our streets and restoring biodiversity, to improving how we manage waste, water, and energy. This plan highlights what we already do and sets out the priorities we'll focus on next, using the resources we already have.

Sustainability became one of the three pillars of our strategic plan, after you told us it was something you valued. The Environmental Sustainability Plan builds on that.

The plan focuses on the following 5 themes:

- Greening, trees and biodiversity
- Water and coastal management
- Waste reduction and circular economy
- Climate resilience and reducing emissions
- Sustainable living and environmental engagement

We have already committed to doing plenty to address each of these areas. We are focused on upgrading and irrigating our reserves across the city. We are planting over 4000 trees each year. Our sustainable Marion Water business continues to go from strength to strength as the pipeline extends through the city. We are continuing to transition our Council vehicle fleet to electric vehicles.

This plan continues that work and helps to clearly outline how we will measure success. It also addresses areas like coastal management which have become a higher priority due to recent events.

KRIS HANNA

Kris Hanna
Mayor of Marion

Executive summary

The Environmental Sustainability Plan 2026–2030 (the Plan) sets out how we will work with the community and partners to improve environmental sustainability outcomes in our city. It is a key document that guides how we will manage the natural and built environment in an ecologically sustainable manner.

This Plan outlines how we will deliver on our Strategic Plan 2024–2034 vision of being a sustainable city where we protect, restore and connect to the natural environment, building resilience to climate change.

The Plan reflects the community’s desire for a stronger commitment to sustainability. Through recent engagement processes, trees, greening, and nature are key areas of concern. There is a growing interest in enhanced environmental services and climate change responses across the city. This Plan is designed to meet that demand, transforming community priorities into meaningful outcomes.

The plan is structured around the following key themes:



Theme 1: Greening, trees and biodiversity



Theme 2: Water and coastal management



Theme 3: Waste reduction and circular economy



Theme 4: Climate resilience and reducing emissions



Theme 5: Sustainable living and environmental engagement

Each theme includes an overview of council’s current activities and services, targets, priorities, and underlying objectives. For every priority, the Plan identifies new activities — these are funded initiatives that expand and strengthen council’s existing work.

The Plan will be delivered across council teams with oversight from an internal Sustainability Committee. Progress will be reported annually, with a formal mid term review in 2028 and final review in 2030.

Introduction

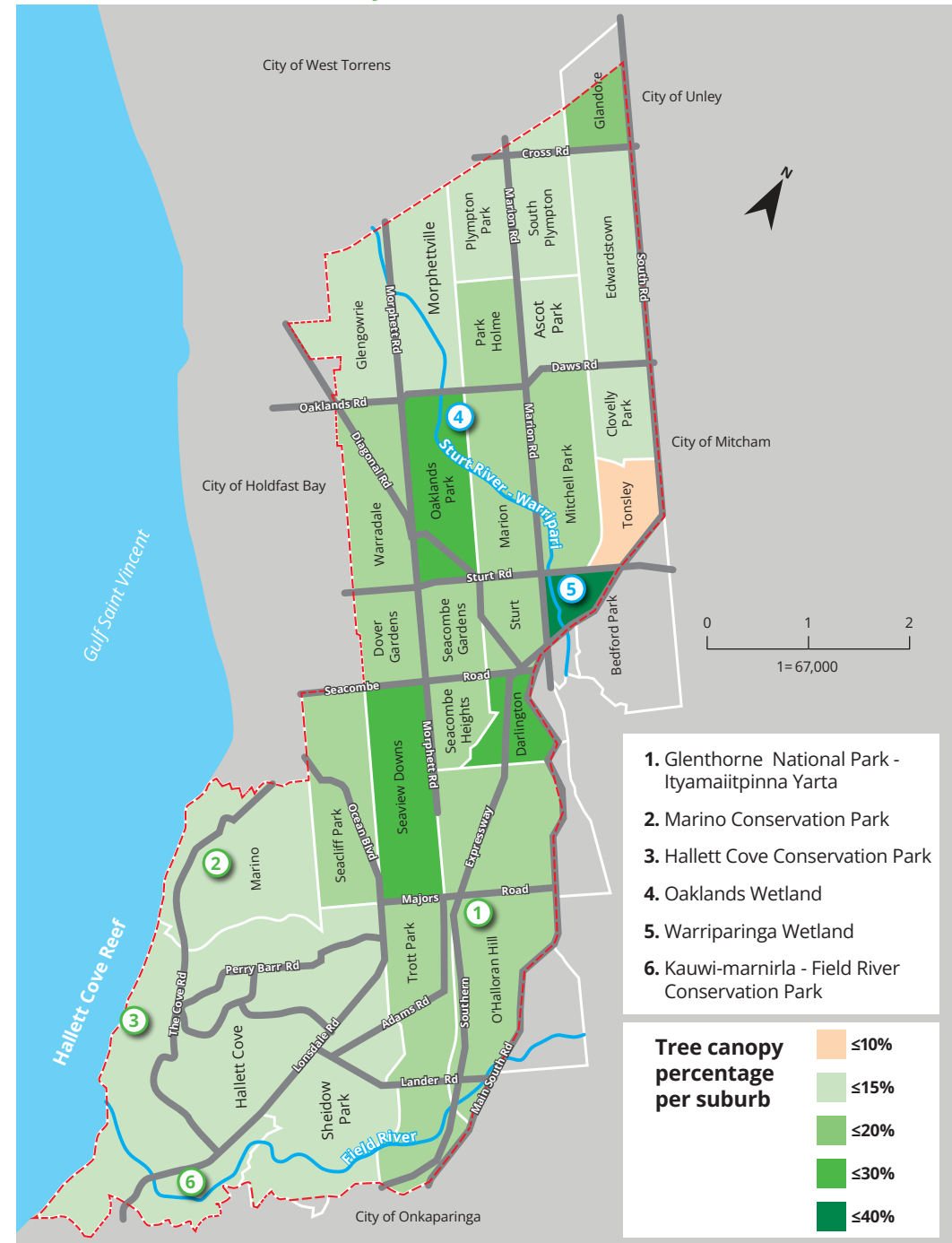
This Plan will guide how we will work with the community and partners to improve environmental sustainability outcomes in our city. This Plan is a key document that guides how we will manage the natural and built environment in an ecologically sustainable manner. It outlines how we will deliver on our Strategic Plan 2024-2034 vision of being a sustainable city where we protect, restore and connect to the natural environment, building resilience to climate change.

Our opportunities include:

- Protecting and restoring our remnant plant and animal species
- Sustainable and innovative water management
- Planting trees and other vegetation to cool our streets
- Adopting innovative initiatives for waste reduction and building a circular economy
- Providing opportunities for the community to connect to nature
- Reducing our carbon emissions for council infrastructure and services
- Mitigating the impacts of climate change on council infrastructure

Our challenges include:

- Irreversible declines in biodiversity
- Tree canopy loss across the city due to tree loss on private land
- Management of natural resources through climate change and infrastructure requirements of an increasing population
- Urban heat pockets across the city
- Increase in waste generation of products with limited or no recycling pathways
- Digitally connected society, with disconnection to nature
- Impacts of climate change on council infrastructure and the community



Our role

The City of Marion plays a proactive role in environmental sustainability by integrating sustainable practices into our operations, asset management, decision-making, and community engagement.

The City of Marion is committed to reducing its environmental footprint through resource conservation, waste reduction, and promoting energy efficiency. It supports the protection and enhancement of natural ecosystems, fosters sustainable development, and works collaboratively with residents, businesses, and other stakeholders to promote environmental awareness and positive behavioural change.

Through these efforts, we aim to create a resilient, sustainable community that thrives within a healthy environment. While we consider broader regional, state, and national priorities in our decisions, our focus remains on working closely with the local community to address local environmental challenges and support sustainable living practices.

Our role in delivering the actions in this Plan ranges from a service provider to delivery partner, facilitator and advocate.

Community priorities

Environmental sustainability stands at the heart of our community's values. This is evident in the City of Marion Strategic Plan 2024–2034, where “Sustainable” is a core aspect of the community vision, shaped by extensive community consultation. Through this process, it was clear that trees, greening, and nature were key areas of concern for our residents.



In addition to the Strategic Plan 2024–2034, recent community engagement initiatives, such as those for the Biodiversity Plan 2024–2029 and Trees Asset



Management Plan 2024-2034, have further emphasised the community's desire for a stronger commitment to sustainability.

There is a growing interest in enhanced environmental services and greater action on sustainability across the city. This Plan is designed to meet that demand. It outlines how the strategic priorities of our community will be transformed into meaningful outcomes, ensuring that environmental sustainability remains a key focus for the City of Marion.

Guiding principles

We will implement this Plan using the following principles from the City of Marion Environment Policy:

Environmental leadership

Demonstrating leadership by striving for environmental sustainability in all our services.

Collaboration and partnerships

Developing positive relationships with our community, partners and customers to enhance environmental sustainability.

Advocacy

Advocating at regional, state and federal levels on environmental matters that may impact council operations, activities or services.

Working regionally

Progressing environmental priorities across our region to ensure efficient planning and allocation of resources, particularly across the southern Adelaide region and water catchments that cut across council boundaries.

Building community capacity and resilience

Support our community and build their capacity to drive environmental sustainability in their local area.

Managing our infrastructure and assets

Ensuring council asset management is sustainable throughout the asset management lifecycle and includes consideration of our natural assets.

Monitoring and measurement

Improving our environmental performance through setting and reviewing targets or measures.



Our Strategic Planning Framework

The City of Marion Strategic Plan 2024–2034 sets out four key strategic directions: Liveable, Sustainable, Community, and Our Organisation. These directions reflect the community’s vision for the future and guide our work over the next decade. They are interconnected and emphasise a whole-of-council approach to achieving long-term, positive outcomes for our city and its people.



This Plan is shaped by these strategic directions and is guided by our Environment Policy, Climate Policy, and Waste Management Policy. It also aligns with several City of Marion strategic and operational documents that support our environmental work, including but not limited to:

- Biodiversity Plan 2024–2029
- Trees Asset Management Plan 2024–2034
- Open Space Framework 2024–2034
- Asset Management Strategy and Framework
- Walking and Cycling Guidelines and 4 Year Plan
- Regional Public Health Plan 2025
- Resilient South Regional Climate Action Plan 2024–2029

This Plan replaces the former Carbon Neutral Plan 2020-2030 with a broader and more integrated climate response. It reflects our commitment to reducing emissions, protecting natural assets, and building a more climate-resilient city.

Our partners and stakeholders

This Plan will be delivered in collaboration with a wide range of stakeholders and partners including but not limited to:

Our community - including residents, ratepayers, businesses, visitors.

Kaurna and other Aboriginal and Torres Strait Islander Peoples.

Local environmental groups and volunteers.

Non-government organisations and community service providers.

Local government subsidiaries and networks including:

Local Government Association South Australia

Resilient South Regional Climate Partnership (Resilient South)

Southern Region Waste Resource Authority (SRWRA)

Adelaide Coastal Councils Network

Councils across Adelaide and beyond

Government agencies, partnerships and essential service providers including:

Green Adelaide

Water Sensitive SA

Department for Environment and Water (DEW)

Green Industries SA

Environmental Protection Authority (EPA)

Coastal Protection Board

SA Power Networks

SA Water

Infrastructure SA

Department for Infrastructure and Transport (DIT)

Department for Housing and Urban Development

Implementation, monitoring and reporting

Accountability for implementing this plan is shared across the organisation. Delivery will be coordinated by an internal Sustainability Committee, which will oversee progress, drive integration across council teams, and ensure actions align with our sustainability goals.

To achieve broader impact, collaborative projects will be actively pursued between council departments, partner organisations, and community groups. These partnerships will drive innovation and amplify efforts towards our sustainability objectives.

While this document spans a four-year period, it is designed to be part of a continuous framework, maintaining a consistent approach to sustainability and reinforcing our long-term commitment to environmental leadership.

Progress on the implementation of this Plan will be reported annually, with a midway review scheduled for early 2028. A full review of the Plan will take place in 2030 to ensure its ongoing relevance.

The stretch targets are aspirational and sit alongside the core targets in this Plan. They provide opportunities to push beyond the core commitments where capacity and resources allow.

Theme one:

Greening, trees and biodiversity



Background

Trees and biodiversity provide unique character to place and are highly valued features in the Marion council area. In addition to having value in its own right, there are many strong and well-documented links between high biodiversity and high community wellbeing.

Despite City of Marion being a highly urbanised metropolitan area, we still have remnant native vegetation and significant biodiversity. Healthy ecosystems and green and blue spaces provide a range of services including reduced urban heat island effects, improved air and water quality, enhanced amenity, and improved wellbeing through a sense of calm, identity and connection to place.

There are many strong and well-documented links between high biodiversity and high community wellbeing.



Key challenges include:

- **Tree canopy loss** and loss of urban green space across the city due to infill development on private land.
- **Urban heat islands** forming due to infill development and climate change.
- **Lack of protection** for native vegetation in Metropolitan Adelaide.
- **Integrating valuation, funding and management of natural assets** (e.g. trees, wetlands, biodiversity etc.) into traditional asset management systems.
- **Restriction on the planting potential** of council land due to roadway and utility clearances.
- **Tree and other vegetation loss** due to warming and drying events.
- **Optimising infrastructure design** to enable greening, trees and biodiversity outcomes.

Our role

We play a key role in protecting, enhancing and restoring biodiversity, and creating cool, healthy and diverse natural environments for the benefit of both the community and local wildlife.

We deliver and support urban greening, tree management and biodiversity conservation through our own operations and in partnership with others. By promoting the planting and maintenance of trees, preserving natural habitats, and encouraging community involvement in environmental stewardship, we aim to build a greener, more resilient urban landscape that supports both ecological health and community wellbeing. Wherever possible, we optimise infrastructure design to work in harmony with existing trees and biodiversity areas and seek opportunities to enhance these natural features as part of our development and renewal projects.

Greening, trees and biodiversity hierarchy

The following hierarchy guides councils decisions around greening, trees and biodiversity:

1. Protect remnant biodiversity and existing trees on council land.
2. Enhance and restore existing natural areas on council land.
3. Create new opportunities for biodiversity, trees and natural spaces on council land.
4. Support and advocate for protection and enhancement of biodiversity, trees and green spaces on non-council land.
5. Offsetting of any unavoidable losses of biodiversity, trees or greenspaces to be retained within the council area.





Strategic alignment and targets

This theme aligns with the following priorities in our Strategic Plan:

- L2.2** Maintain and deliver community spaces, streetscapes and facilities that are intergenerational, vibrant, multiuse, and welcoming.
- S1.1** Mitigate urban heat by enhancing cooling and greening efforts throughout the city, and by seeking new opportunities to create additional open spaces.
- S1.2** Manage tree planting and canopy development with an emphasis on enhancing character, ensuring diversity promoting safety and boosting climate resilience.
- S1.3** Expand biodiversity and natural landscaping across the city, with a focus on the protection and restoration of remnant and threatened species and ecosystems.
- S2.1** Create attractive, vibrant, useable open spaces.
- S2.3** Explore partnerships with Aboriginal and Torres Strait Islander People to learn and share traditional land management practices.

Alignment with state and national targets

We aim to support these greening and biodiversity targets that have been set by the South Australian and the Australian Government, noting that we have only limited control over the outcomes.

30% tree canopy cover across Metropolitan Adelaide by 2055¹

No new extinctions²





Targets for council operations

These targets will measure our progress towards achieving improved greening, trees and biodiversity outcomes for our operations.

1. Ensure **90%** of plantable spaces along council-managed roads are filled with trees by **2030**



2. Achieve **30%** canopy cover over council-managed land by **2055**⁷

3. Plant **60,000** native plants by **2030** (baseline 2024/2025)⁸

4. Biodiversity condition at priority biodiversity sites is **maintained or improved**⁹

Stretch target for council operations

1. No loss of remnant vegetation on council-managed land.

Community and environmental indicators and goals

These indicators, industry trends and community aspirations are outside of council control, however they will be monitored to help inform our future programs and funding priorities. Each indicator is accompanied by a preferred trend direction and data sources. The trend direction is based on past community feedback or existing government directions.

- Increase protection laws for remnant vegetation, revegetation greater than 20 years and revegetation in priority areas.³
- Developments in the council area have a net positive biodiversity impact.⁴
- Improve the condition and extent of remnant native vegetation and biodiversity in the council area.⁵
- Increase tree canopy cover on private land within our city.⁶





Current activities



✓ **Tree planting and maintenance**

Annually, we plant over 3,500 trees, aiming to enhance urban greenery and environmental health. This work is guided by an industry-leading Trees Asset Management Plan 2024-2034. We are progressively increasing tree canopy on council-managed land.

✓ **Interactive tree map**

Residents can access an online map to view tree locations, species information, and future planting sites within the city.

✓ **Biodiversity Plan 2024-2029**

This plan guides the management, enhancement, and protection of natural areas and biodiversity over the next five years. We aim to improve connectivity of biodiversity through our major corridors including the coastline and gullies, Field River, Southern Hills Face and Sturt River - Warriparri.

✓ **Supporting wildlife-friendly gardens and weed removal**

Resources are offered to help residents create gardens that support native wildlife, including butterflies, birds, frogs, and lizards, alongside programs targeting the eradication of invasive plants like gazanias and fountain grass.

✓ **Urban Tree Warriors and Adopt-a-Tree**

Support is provided for residents to get involved with caring for newly planted street trees.

✓ **Verge and significant tree incentives**

Funding is available to support residents to plant and maintain their verges, as well as supporting private landowners to retain and maintain significant and regulated trees.





✓ Support local conservation groups

Council staff support four Friends groups who volunteer thousands of hours each year to plant and maintain biodiversity in our reserves.

✓ Coastal biodiversity protection

Continuing to protect significant coastal heathland and grassland sites, educate our community and advocate for the protection of intertidal and subtidal biodiversity, rocky reefs and marine areas.

✓ Advocating for biodiversity and greening outcomes

Our advocacy efforts include improved biodiversity protection laws and biodiversity outcomes in State Government infrastructure and transport projects.

✓ Collaborating on regional conservation efforts

Working with the State Government and regional partners on conservation projects, including coastal conservation, Glenthorne National Park- Ityamaiitpinna Yarta and the Kauwi-marnirla Field River catchment.

✓ Promoting and celebrating local biodiversity and trees

Providing opportunities for the community to celebrate and appreciate local biodiversity and trees including educational tree tags and Tree of the Month.

✓ Promote greening in commercial precincts

Encourage the integration of greening and biodiversity in commercial business precincts including through the Greening of Edwardstown project.

✓ Biosecurity, nuisance and declared species

Working with regional partners on ecologically sensitive approaches to problem-causing species in the council area.



Priority G1

Expand and improve council's natural assets

● Objectives

- **G1a** Protect, enhance and restore biodiversity with a focus on the critical protection of remnant vegetation.
- **G1b** Develop open spaces and streetscapes that protect and enhance tree canopy, promote natural landscaping and enable climate resilience.
- **G1c** Increase nature in council developments through biodiversity-sensitive urban design (BSUD).
- **G1d** Develop organisational maturity in natural asset management through improved data, planning and monitoring.

● New activities

The following new activities will be undertaken over the course of this plan in addition to our current activities:

G1.1 Sustainable streetscapes: During the revision of streetscape guidelines, include detail that supports developers to prioritise climate resilience and greening in public realm– particularly in verge spaces.

G1.2 Verge gardening demonstration sites: Promotion of verge gardening projects to showcase appropriate native species and designs.

G1.3 Alignment of footpath upgrades with verge gardening promotion: Look for opportunities to align the footpath capital works with promotion of the verge incentive program to support residents with dolomite removal required in preparation for verge gardens.

G1.4 Biodiversity mapping: Increase mapping and reporting on the condition and extent of biodiversity on council-managed land.

G1.5 Strengthening tree management practices: Ensure all council-managed trees are mapped in the Forestree management system and engage with national and international networks to monitor leading practices in tree management.

G1.6 Support habitat creation in our open spaces: Review and where appropriate expand the program for constructed tree hollows.

G1.7 Biodiversity-sensitive urban design (BSUD): Investigate opportunities for BSUD demonstration projects to enhance urban biodiversity.

G1.8 Natural asset management: Work with Resilient South councils and the Institute of Public Works and Engineering Australia (IPWEA) to investigate approaches to incorporate natural assets into conventional asset management planning systems including consideration of green infrastructure / natural asset in the next round of asset management planning.



Priority G2

Advocate for trees, greening and biodiversity in the community

● Objectives

- **G2a** Encourage residents to protect, enhance and restore tree canopy and biodiversity on private land.
- **G2b** Advocate for State Government policies that promote increased tree canopy and protection of trees.
- **G2c** Encourage greening and biodiversity-sensitive design in residential and commercial developments.
- **G2d** Advocate for improved biodiversity protection laws.



● New activities

The following new activities will be undertaken over the course of this plan in addition to our current activities:

G2.1 Greening in vulnerable communities: Explore new partnerships and engagement opportunities to enhance greening in low socio-economic areas.

G2.2 Increased promotion of greening in developments: Further promotion of resources and educational materials that assist in greening in residential developments.

G2.3 Education about tree selection and care: Develop new resources to help educate residents about tree species selection, planting and caring for trees on their land.

G2.4 Biodiversity Act: Seek opportunities for improved protection of urban biodiversity through the new *Biodiversity Act 2025*.

G2.5 Big trees: Advocate for the improved protection and management of large trees now and into the future – particularly river red gum communities.



Priority G3

Enhance regional biodiversity and greening

● Objectives

- **G3a** Collaborate with partners to protect, enhance and restore regional biodiversity corridors along Sturt River - Warriparri, Field River, coastline and the southern hills face.
- **G3b** Collaborate with partners to enhance greening of regional active transport connections and other transit routes.
- **G3c** Collaborate with partners to support regional monitoring of tree canopy, green cover and urban heat.
- **G3d** Collaborate with partners to develop regionally consistent biodiversity monitoring and reporting protocols.
- **G3e** Collaborate with Kurna to improve cultural connections through nature.
- **G3f** Support research and development to enhance and future-proof our natural environment.
- **G3g** Advocate for the Local Government Association (LGA) to improve council access to local markets for nature repair and carbon sequestration.

● New activities

The following new activities will be undertaken over the course of this plan in addition to our current activities:

G3.1 Urban heat and tree canopy mapping: Work with State and local government partners to update mapping of tree canopy cover and urban heat in 2026 and 2030.

G3.2 Climate-resilient trees: Collaborate with in-kind support for research programs such as Future Trees (University of Adelaide) to understand threats to our trees and encourage diversity and climate resilience.

G3.3 Tree data standards: Work with Resilient South councils to scope the development of consistent tree data standards that promote consistent monitoring and reporting.

G3.4 Biodiversity metrics: Work with Resilient South councils to scope the development of consistent biodiversity monitoring and reporting.

G3.5 Sturt River - Warriparri: Look for new opportunities to increase ecological and cultural outcomes along Sturt River – Warriparri.

G3.6 Torrens to Darlington (T2D) South Road Upgrade: Collaborate with partners to advocate for improve greening outcomes through the State Government T2D initiative.



Theme 2:

Water and coastal management



Background

Water is a precious natural resource that is essential for the vitality and wellbeing of our community and environment.

South Australia faces climate change challenges—including declining average rainfall, prolonged droughts, and more frequent and intense storm events—we must proactively manage water to enhance resilience, support equity in water allocations and safeguard our future.

Water is a precious natural resource that is essential for the vitality and wellbeing of our community and environment.

Water and coastal management



Urban infill and reduced landscape permeability are increasing stormwater runoff and contributing to higher pollutant load entering streams and rivers that feed into coastal waters in Gulf St Vincent. Without intervention, this will place further pressure on natural waterways and marine ecosystems. Water Sensitive Urban Design (WSUD) is essential to reversing this trend—ensuring new developments incorporate permeable surfaces, green infrastructure, and stormwater treatment to improve water quality and reduce urban flooding.

Our coastal environments are increasingly under threat from the impacts of climate change. Over the coming century, sea levels are projected to rise by up to a metre or more, contributing to increased coastal erosion and the inundation of low-lying areas. These and other changes will significantly affect coastal ecosystems, potentially leading to habitat loss and altered coastal conditions. We play a critical role in identifying coastal hazards and planning adaptive responses that enhance the resilience of our region and contribute to broader climate resilience efforts.



Our waterways are important assets that require ongoing protection. Erosion control, pollutant management, flow regime and invasive species removal are critical priorities for maintaining the health of these ecosystems. Meanwhile, aging stormwater infrastructure, coupled with increasing demands from urban development and climate variability, reinforces the need for strategic investment in stormwater management, upgrades, and maintenance.

The transition to a water sensitive city is part of South Australia's broader Resilient Water Futures framework, which outlines a holistic approach to integrated water management, drinking water security, stormwater resilience, and environmental sustainability.

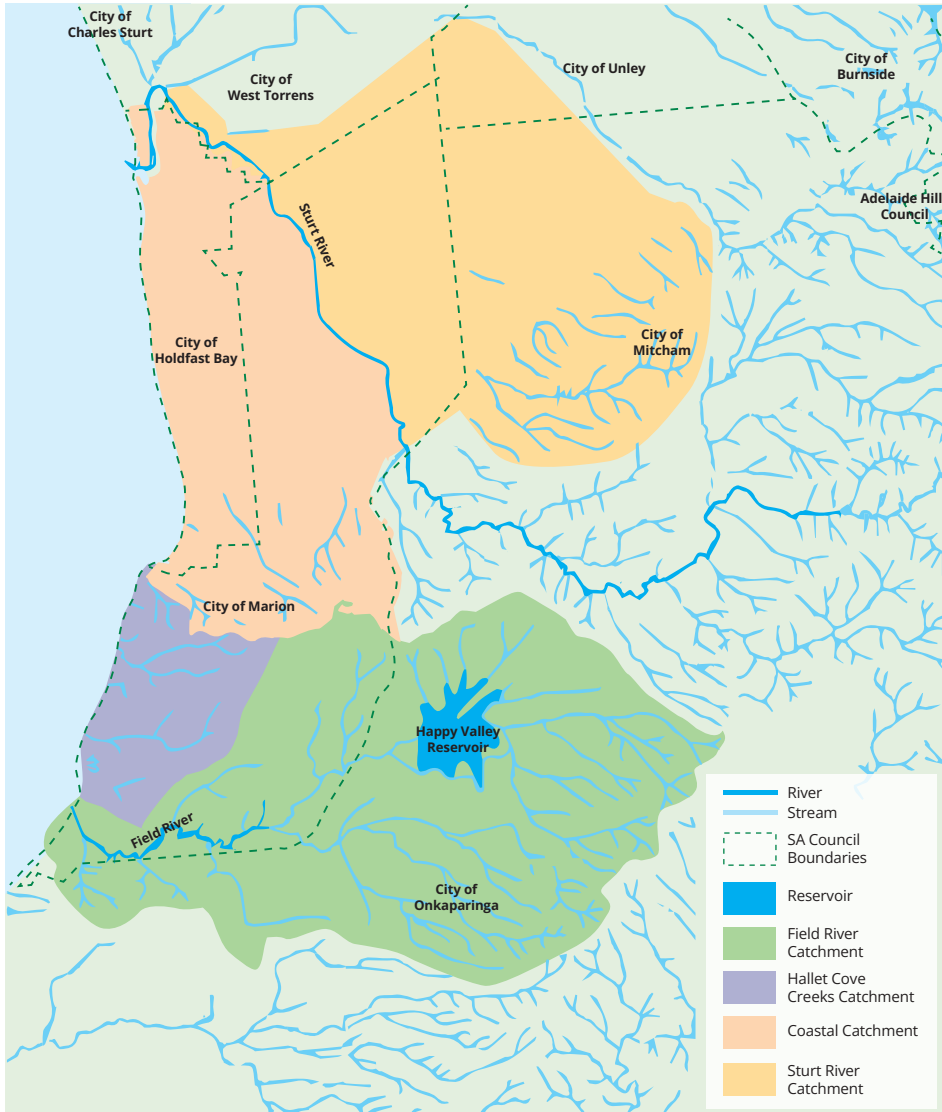
This transition requires collaboration across multiple agencies, including:

- EPA – oversees water quality policies, pollution prevention and monitoring and reporting on the State of the Environment.
- Green Adelaide and the Department for Environment and Water – manage surface and ground water allocation and planning.
- Adjoining councils and the Stormwater Management Authority – stormwater management and planning.
- SA Water – storage, treatment and supply of potable water via mains water reticulation and management of sewerage system.





City of Marion catchments map



City of Marion has four stormwater catchments in the City of Marion, each at different stages of management planning as shown in the below table.

Catchment	Catchment Management Plan	Responsible Councils	Status
Coastal Catchment	Glenelg to Marino Stormwater Management Plan	City of Marion City of Holdfast Bay	Approved 2014 Due for review in 2026
Sturt River Catchment	Lower Sturt River Catchment Stormwater Management Plan	City of Holdfast Bay City of Marion City of Mitcham City of Unley City of West Torrens	Draft in progress
Hallett Cove Creeks Catchment	Hallett Cove Creeks Catchment Stormwater Management Plan	City of Marion	Approved 2014
Field River Catchment	Field River Catchment Stormwater Management Plan	City of Marion City of Onkaparinga	Draft in progress

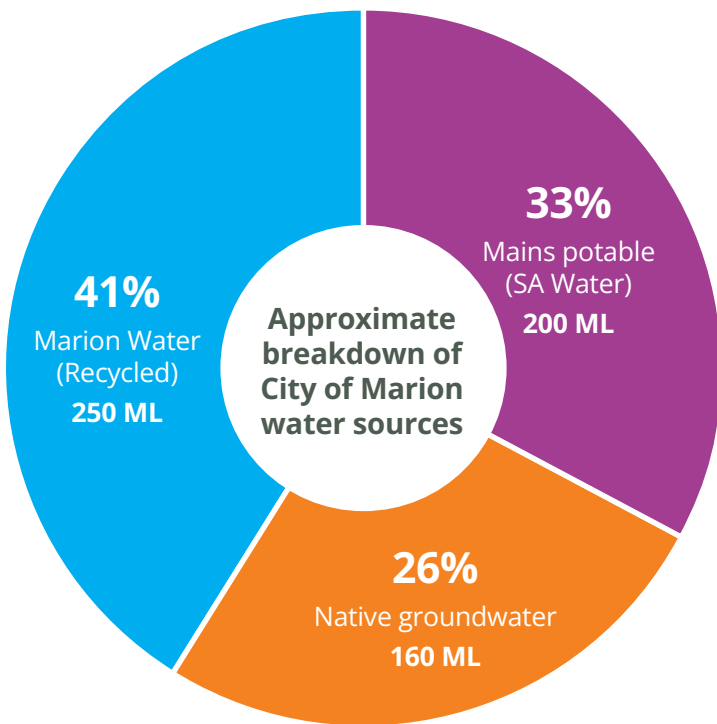
By embedding water sensitive principles into urban planning, investing in resilient infrastructure, and collaborating across agencies, we are actively working towards a water-secure, climate-adaptive, and liveable future for all.

The Marion Water Plan 2023-2026 guides councils water business, treated stormwater is pumped to our parks, gardens and ovals, displacing potable water previously used to irrigate these high value public open spaces. In addition, water is also supplied to adjacent councils, schools and sports grounds at Flinders University and the Women’s Memorial Playing Fields in Mitcham. The Marion Water Plan 2023-2026 includes a strategy that supports sustainable economic growth whilst prioritising supply to City of Marion sites first.





The graph below shows a breakdown of the water sources used for council operations. This is an approximate average based on water consumption over several years. It is worth noting that annual water consumption is subject to significant seasonal variations of up to 50%. The water use hierarchy demonstrates how we prioritise water use, considering local conditions and seasonal variations in water availability.



Water use hierarchy

Where council needs to use water, we will prioritise consideration of water sources in accordance with the following hierarchy:

1. On-site retention and reuse

Retain and use stormwater runoff and rainwater onsite through water sensitive urban design (WSUD) features or storage, in line with approved water allocations and where quality is appropriate.

2. Groundwater

Sustainable use of groundwater resources in accordance with approved allocations and water quality conditions. Groundwater remains the most cost-effective and reliable non-potable source available to council.

3. Manage Aquifer Recharge - MAR

Use recycled stormwater supplied by Marion Water where feasible, cost-effective, and consistent with the Marion Water Plan. While recycled water supports circular water management and environmental outcomes, current costs and supply limitations mean it is less economically viable than groundwater for most council operations. Council will continue to explore partnerships, grants and infrastructure improvements to expand viable use in the future.

4. Potable water

Use drinking-quality mains water supplied by SA Water only where other sources are unavailable or unsuitable for the intended use.

Future water sources that might be considered, however are not a short-term priority for council operations, may include sewer mining, connection to the Glenelg Adelaide Pipeline for recycled sewage water, connections to other aquifer storage and reuse schemes, greywater reuse onsite, temporary carting of water from external sources for emergencies.



Water and coastal management



Our role

We are committed to being a leader in delivery of WSUD, supporting Adelaide's vision as a water sensitive city. We recognise that water is fundamental to a thriving, climate resilient, and liveable city, and we are dedicated to integrated, sustainable water management that protects resources for both the environment and future generations.

We will lead by example, embedding water sensitive principles into all aspects of our operations, capital works and asset design, while empowering the community, businesses, and developers to adopt innovative and sustainable water practices.

Through collaboration with stakeholders, we will drive:

Clean, healthy waterways – Protecting and restoring natural ecosystems to support healthy waterways that exceed water quality standards.

Water Sensitive Urban Design (WSUD) - Creating greener, cooler, and flood-resilient suburbs.

Water recycling and efficiency – Maximising the use of stormwater, recycled water, and alternative sources and minimise the use of potable water.

Smart and resilient water infrastructure – Future-proofing our city's water systems to adapt to climate change and urban growth.

Community leadership and partnerships – Educating, engaging, and enabling the community to be water wise.

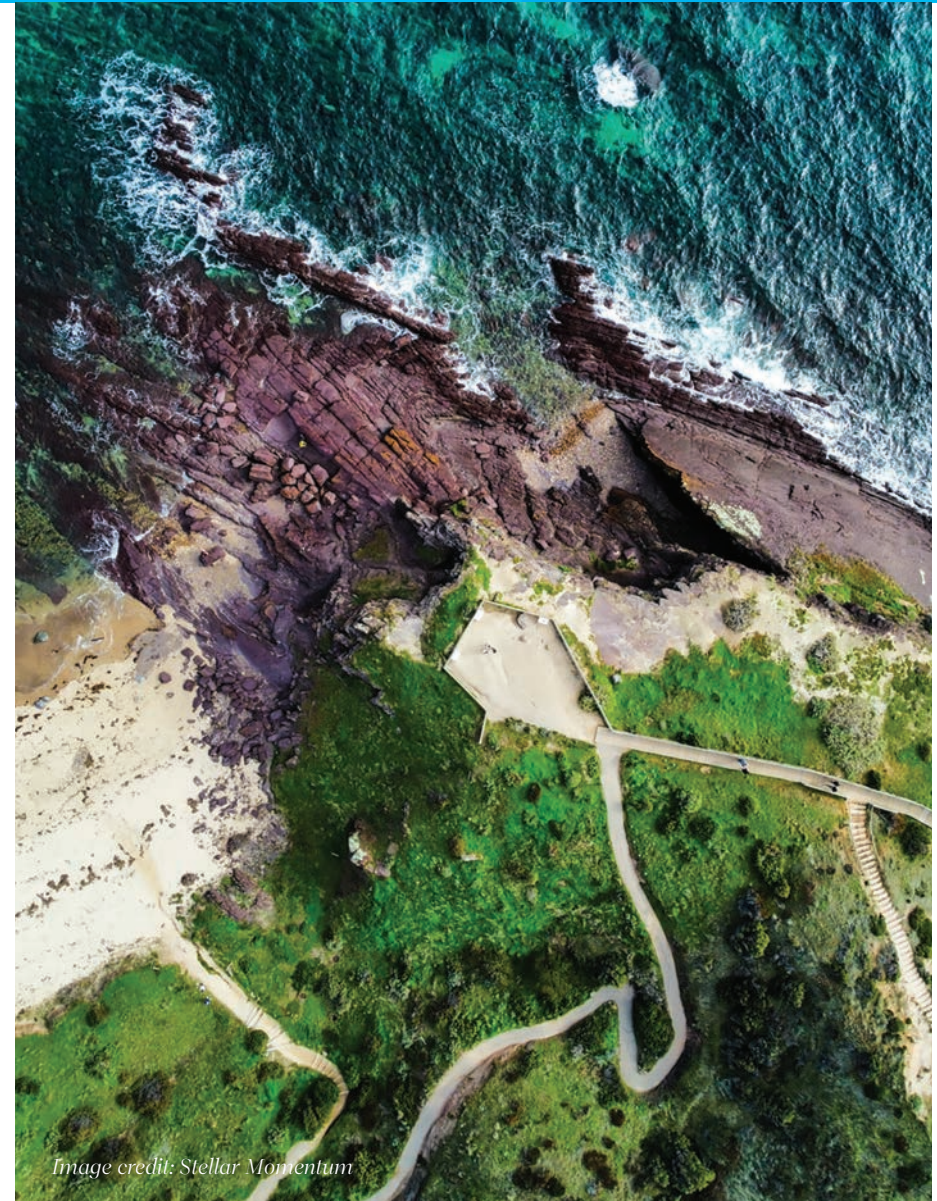


Image credit: Stellar Momentum





Strategic alignment and targets

This theme aligns with the following priorities in our Strategic Plan:

- L2.1** Use sustainable and Universal Design Principles, smart technology, and codesign to enhance accessibility.
- L4.2** Council infrastructure is assessed for climate risks and actions are taken to embed and improve resilience.
- S1.6** Manage our coastal environment and respond to the impacts of sea level rise, climate and storm surge.
- L4.1** Advocate to the community on the benefits of environmentally sustainable design in buildings.
- S1.4** Pioneer new methods in sustainable management of water through water sensitive urban design, water recycling, and provision of water for the environment.
- S2.3** Build resilience to climate change by managing the impacts and risks.

Alignment with state and national targets

We support these directions around water management that have been set by the South Australian and Australian Government.

Managing groundwater supplies within sustainable limits as per the Central Adelaide Prescribed Wells Area Water Allocation Plan.

The priorities of the Resilient Water Futures initiative led by SA Water.

Aligning with the South Australian Coast Protection Policy (2022), which includes planning for a 0.3m sea level rise by 2050¹⁰, a 1m rise by 2100¹¹, and consideration of other coastal changes expected over the next 200 years due to ongoing sea level rise and coastal erosion.





Targets for council operations

These targets will measure our progress in improving water management for our operations.

1. Continually increase the use of **recycled water** for our operations by 2030.

5. Install **200** new street tree inlets by 2030.

2. Ensure potable mains supply water does not exceed **30%** of the total water used for irrigation of council land and aim to keep total potable water consumption **below 200MI** per year.

3. Expand Marion Water to enable supply of up to **300MI** per year by 2030.

4. Maintain groundwater extraction within sustainable limits of up to **200MI** per year.

6. Complete and implement updated **Stormwater Management Plans (SMPs)** for all catchments by 2030.



Stretch target for council operations

1. Install 1000 new street tree inlets by 2030 (subject to grant funding).

Community and environmental indicators and goals

- Decrease reliance on the River Murray for metropolitan water supply.¹²
- Increase stormwater harvesting and reuse over the use of potable mains supply water.¹³
- Increase uptake of WSUD features such as rainwater tanks, permeable paving, greywater systems or raingardens.¹⁴
- Minimise stormwater runoff.¹⁵
- Stormwater quality within acceptable limits.¹⁶
- Groundwater levels and quality to be within acceptable limits.¹⁷
- Marine condition monitoring reports to be within acceptable limits.¹⁸
- Reduce marine debris.¹⁹
- Reduce microplastics in wetlands, watercourses and coastal environments.²⁰
- Reduce community per capita mains water consumption.²¹





Current activities

✓ Stormwater management

Construction and maintenance of the stormwater infrastructure network is informed by catchment-based SMPs and a Stormwater Asset Management Plan to reduce risks of flooding and protect water quality.

✓ Water sensitive streetscapes and reserves

To reduce stormwater runoff and improve water quality in our streets and reserves, we deliver street-sweeping services and continue to expand, monitor and maintain WSUD features - such as gross pollutant traps, street tree water inlets, raingardens and permeable paving.

✓ Improving waterways

Collaborating with Green Adelaide and the EPA to define and establish water quality and environmental flow requirements for waterways within our control.

✓ Responsible use of groundwater

Working alongside Green Adelaide and the EPA, we ensure our operations protect groundwater quality and our water extraction is within our agreed allocation and sustainable limits and help reduce reliance on potable water.

✓ Monitor coastal climate change

Our coastal monitoring program is focused on monitoring, assessing and responding to coastal climate change risks.

✓ Coastal hazard adaptation planning

We work with the community and other stakeholders to plan for coastal hazards particularly associated with coastal climate change and sea level rise.

✓ Marion Water

The Marion Water Business delivers recycled water for council reserves and our customers to reduce reliance on potable water in our region.



✓ Promote awareness of water quality

Supporting the work of lead State Government agencies by raising awareness with the community on water quality issues, particularly where public health is a consideration.

✓ Collaboration and partnerships

In partnership with Water Sensitive SA, neighbouring councils, water authorities and industry experts, we work to improve integrated water management and collaborate on the transition to a water sensitive region.

✓ Advocacy

We advocate to the State Government for holistic catchment-scale planning that integrates water quality, hydrology, biodiversity to improve outcomes for the marine environment.



Priority WC1

Protect and enhance our water catchments and coast

● Objectives

- **WC1a** Advocate for the rivers, creeks, wetlands and groundwater across the city to meet or exceed acceptable standards²² in health and quality.
- **WC1b** Maintain and improve council's stormwater network to reduce runoff, improve water quality, mitigate against flooding and support climate-resilience.
- **WC1c** Integrate WSUD into council-managed landscapes to increase green infrastructure and mitigate extreme urban heat.
- **WC1d** Increase organisational capacity to design, build and maintain WSUD treatments.
- **WC1e** Monitor our coastline and develop and implement planned responses to coastal climate change hazards.

● New activities

The following new activities will be undertaken over the course of this plan in addition to our current activities:

WC1.1 Stormwater Management Plans (SMPs): Pending funding from the Stormwater Management Authority, collaborate with the City of Onkaparinga on the development of a SMP for the Field River catchment and review the Glenelg to Marino Stormwater Management Plan to ensure stormwater infrastructure is climate resilient.

WC1.2 Integrate WSUD in major council projects: Ensure the review of the Environmentally Sustainable Design (ESD) Guidelines and Streetscape Guidelines include guidance on WSUD features for council projects.

WC1.3 Improve WSUD maintenance programs: Review maintenance levels for WSUD assets with a focus on data collection and defining levels of service through the asset management framework.

WC1.4 Build staff knowledge and skills: Strengthen WSUD skills and knowledge through workforce training and development.

WC1.5 Coastal Hazard Adaptation Plan: Develop a Coastal Hazard Adaptation Plan for the City of Marion²³.

WC1.6 Harmful Algal Bloom: Share accurate information, engage the community, and support initiatives that build resilience, restoration, and recovery from the 2025 Harmful Algal Bloom event along our coast.



Priority WC2

Conserve water, diversify our water sources and create water sensitive council facilities

● Objectives

- **WC2a** Create water sensitive council buildings and facilities.
- **WC2b** Maximise stormwater capture and reuse initiatives including onsite retention and managed aquifer recharge schemes.
- **WC2c** Prioritise use of rainwater and irrigation with recycled water for climate resilient landscapes.
- **WC2d** Use native groundwater within sustainable limits.
- **WC2e** Maximise irrigation efficiency in council reserves through innovation and smart technology.



● New activities

The following new activities will be undertaken over the course of this plan in addition to our current activities:

WC2.1 Marion Water Business: Review the Marion Water Plan 2023-2026 to expand how it supports climate resilience and identify future new areas of water supply and demand.

WC2.2 Water sensitive buildings: Review the ESD Guidelines to identify minimum mandatory standards for water resilience in new buildings and upgrades.

WC2.3 Irrigation planning: In the review of council's irrigation plans, ensure use of recycled water and groundwater is prioritised over mains potable water where feasible and utilise digital/smart water infrastructure where appropriate.



Priority WC3

Promote the establishment of a water sensitive city

● Objectives

- **WC3a** Collaborate with stakeholders - other councils, government agencies, SA Water, businesses and community - for coordinated approaches and improved governance of catchment-scale, integrated water management.
- **WC3b** Promote WSUD practices for existing homes, businesses and small-scale developments.
- **WC3c** Demonstrate leadership and innovation in the application of smart and adaptive water infrastructure.



● New activities

The following new activities will be undertaken over the course of this plan in addition to our current activities:

WC3.1 Resilient Water Futures:

Increase the integration of water resilience measures throughout existing council services and reviews of council plans with support from Water Sensitive SA²⁴.

WC3.2 Expand stormwater monitoring:

Expand monitoring of catchment drains to assess stormwater volume, water quality, and WSUD effectiveness.

WC3.3 Water sensitive

developments: Work with partners such as Water Sensitive SA and PlanSA to expand educational campaigns and advocate for new planning policy around water sensitive homes, businesses and developments with an increased focus on onsite water retention.



Theme 3:

Waste reduction and circular economy



Background

Waste is a critical environmental sustainability issue, with waste volumes exponentially increasing as resource consumption continues to grow, fuelled by short-lived products.

We have a key role to play in waste management and increasingly in waste reduction, both in the community and in council operations.

With a municipal waste diversion rate of 54%, surpassing the state average of 51%, we are making progress in reducing waste to landfill. However, only 15% of food waste is currently being diverted to the green organics bin and this remains a strategic priority for council.

We have a key role to play in waste management and increasingly in waste reduction, both in the community and in council operations.



Waste hierarchies

Our operations and services are guided by two key frameworks, the waste hierarchy and the circular economy. The waste management hierarchy underpins waste management policy and practice across Australia and is illustrated below.

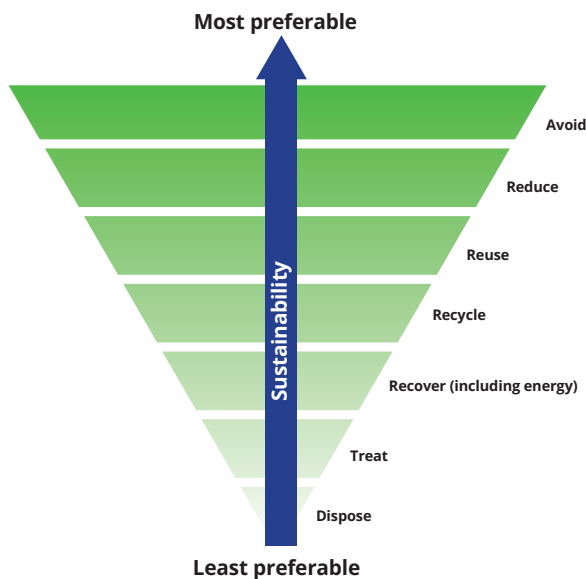


Image credit: Environmental Protection Authority

The circular economy is a model for rethinking the approach to products and services and shifting the way that materials in products are extracted, made, consumed and repurposed to ensure emissions are reduced, less natural and raw materials are needed, products are kept in use longer and product design eliminates waste and pollution.

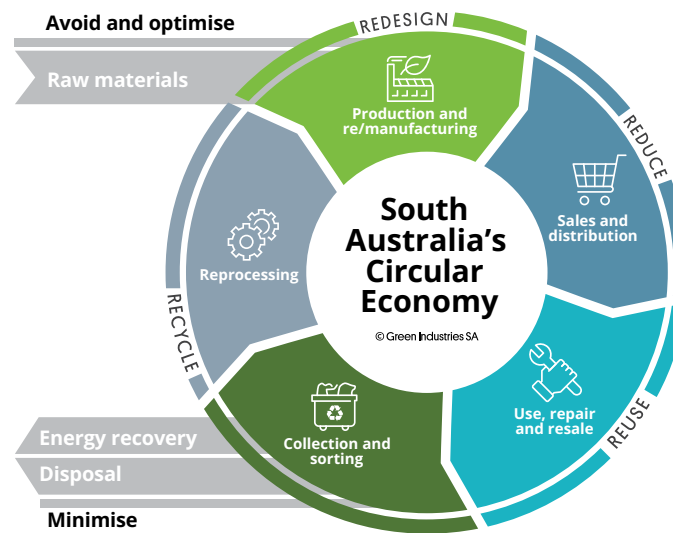


Image credit: Green Industries SA

Problematic waste streams

Problematic waste streams lacking recycling pathways, which will present increasing challenges over the next 5-10 years, include:

- Electronic waste - any item with a power cord or battery.
- Batteries - including e-cigarettes and embedded batteries.
- Solar panels.
- Mattresses.
- Hard-to-recycle plastic packaging - including soft plastics and single-use.
- Clothing and textiles.





Our role

We play a vital role in waste management by providing kerbside bin collections, hard waste collection and recycling drop-off services to the community. We have a strong history of collaborating with stakeholders to minimise waste and promote resource recovery, supporting the broader shift towards a circular economy.

We govern the Southern Region Waste Resource Authority (SRWRA) along with the Cities of Holdfast Bay, and Onkaparinga. We work with these partners to drive innovation in waste and recycling, including the industry-leading Southern Materials Recovery Facility (SMRF).

Additionally, the council provides waste and recycling education to the community to encourage the adoption of sustainable behaviours at home to increase recycling and minimise waste.

We support a circular economy through:

- Reusing materials and purchasing recycled materials and products.
- Supporting sustainable business practices that contribute to a circular economy.
- Supporting resource sharing in our community.
- Advocating to State and Federal Government for waste-related regulatory and policy reforms.

Our vision is for a city free of waste where there is no pollution impacting local ecosystems or public health.





Strategic alignment and targets

This theme aligns with the following priorities in our Strategic Plan:

- L4.1** Advocate to the community on the benefits of environmentally sustainable design in buildings.
- S1.5** Minimise waste, maximise resource recovery and build circular economy, through our services and support to organisations and the community.



Alignment with state and national targets

We support these targets that have been set by the South Australian and the Australian Government.

- Zero avoidable waste to landfill by 2030²⁶
- Halve food waste going to red general waste bins by 2030 (from 2024 baseline)²⁷
- 70% of kerbside waste diverted from landfill by 2025²⁵
- Reduce the average waste generation per person by 10% by 2030²⁹
- Double circularity by 2035²⁸





Targets for council operations

These targets will help us track our progress in reducing waste and supporting a circular economy by 2030.



1. Divert at least **60%** of waste generated by council-run facilities from landfill by 2029/30

2. Achieve average resource recovery over **80%** at council-run events

Stretch target for council operations

1. Divert at least **70%** of waste generated by council-run facilities from landfill by 2029/30

2. Achieve average resource recovery over **90%** at council-run events (per event)

Community and environmental indicators and goals

These indicators, industry trends and community aspirations are outside of council control, however they will be monitored to help inform our future programs and funding priorities. Each indicator is accompanied by a preferred trend direction and data sources. The trend direction is based on past community feedback or existing government directions. These indicators are measured through audits of kerbside collection bins and other data from waste service providers.

- Reduce the percentage of contamination in the yellow co-mingled recycling bin by weight.
- Reduce the percentage of hazardous waste in the kerbside collection bins - including electronic waste - by weight.
- Reduce the percentage of soft plastics in the kerbside collection bins by weight.
- Reduce the percentage of textiles in the kerbside collection bins by weight.
- Reduce the percentage of food waste in the red general waste bin by weight.
- Reduce the percentage of nappies and sanitary products in red general waste bins.





Current activities

✓ Southern Regional Waste Resource Authority (SRWRA)

We drive innovation in waste management services incorporating the landfill and SMRF.

✓ Partnering with waste service providers

In collaboration with SRWRA, waste service providers and government stakeholders, we work to maximise resource recovery and circular economy inputs and minimise contamination of recyclable materials.

✓ Managing waste through a comprehensive kerbside collection system

Our kerbside 3-bin system separates general waste, co-mingled recycling, and organics, with each waste type collected for disposal, recycling, or composting at dedicated facilities.

✓ Waste education and behaviour change

Delivering strategic programs and projects which encourage residents and visitors to reduce and recycle waste in our city, including food waste recycling incentives (e.g. kitchen caddies), waste minimisation at major council events, and provision of community education resources.

✓ Reduce waste across council operations

Encouraging waste avoidance at council events, offices, and community facilities by improving waste separation, reduce packaging, prioritising purchasing of recycled content materials, and engaging contractors, tenants and suppliers in Council's waste reduction efforts.

✓ Hard waste collection and responding to illegal dumping

Providing a hard waste collection service that aims to recycle at least 50% of hard waste and respond to illegal dumping with education and enforcement.

✓ Supporting pollution prevention

Providing bins and infrastructure in key reserves to reduce litter and dog faeces; respond to spills or notifications of contamination on council land and promote public hazardous waste drop-off services.



Waste reduction and circular economy



✓ Promote litter reduction activities

Providing support for community-led activities such as Clean Up Australia Day and other clean-up activities at litter hotspots such as Lower Field River outlet.

✓ Advocacy for improved waste-related legislation

Advocating for waste-related legislative changes at state and federal levels including legislation impacting waste collection service delivery, soft plastic recycling and mandatory product stewardship arrangements.

✓ Supporting circular economy in council operations

We are standardising three-bin systems to optimise recycling at our facilities, prioritising the use of recycled materials in civil infrastructure, such as roads and footpaths, and converting green waste from council operations into mulch.

✓ Collaborate for greater impact

Exploring joint procurement partnerships with other councils to strengthen buying power for sustainable, circular procurement.

✓ Strengthening partnerships for a circular economy

Partnering with local businesses and community champions to drive circular economy solutions.

✓ Support businesses in adopting circular economy principles

Assisting local businesses to identify opportunities for circular economy practices, improved waste management, and connection with Green Industries SA for tailored advice and resources.



✓ Promote specialised recycling services

Encouraging the use of drop-off locations for specialised recycling, including batteries, electronic waste, chemicals, paint, and inform the community about fire risks from batteries in bins and encourage safe disposal alternatives.

✓ Support for waste reduction campaigns

Promoting national and international waste reduction initiatives, such as Plastic Free July and National Recycling Week, to raise awareness and inspire action.



Priority WR1

Develop circular council operations

● Objectives

- **WR1a** Establish procurement practices that support sustainable markets for material circularity.
- **WR2b** Reduce waste and resource consumption from corporate operations.
- **WR3c** Lead by example through sustainable procurement practices.
- **WR3d** Measure progress toward circular economy goals and report on effectiveness of policies and programs.



● New activities

The following new activities will be undertaken over the course of this plan in addition to our current activities:

WR1.1 Embed circular economy into council procurement: Integrate circular economy principles into scheduled review of procurement policies to increase recycled material use and set targets for recycled content in purchases.

WR1.2 Purchase recycled content in infrastructure: Identify new priority materials to advance circular economy goals and integrate requirements into tenders and specifications.

WR1.3 Support reuse and resource recovery: Review asset disposal and resource recovery practices at council depots and stores to identify opportunities to better align with circular economy principles.



Priority WR2

Encourage our community to reduce waste

● Objectives

- **WR2a** Build community capacity to repair, reuse and share resources.
- **WR2b** Increase recovery of food waste and recyclable resources from landfill to the circular economy.³⁰
- **WR2c** Develop community education campaigns and behaviour change initiatives to reduce waste and increase recycling in households.
- **WR2d** Educate the community about appropriate recycling practices to reduce contamination.

● New activities

The following new activities will be undertaken over the course of this plan in addition to our current activities:

WR1.1 Promoting sharing, repair and reuse in the community: Find new ways to encourage the sharing economy by supporting repair cafes, swap events and maker spaces, where the community can access items that reduce waste.

WR1.2 Foster a reduction of textiles to landfill: Raising community awareness about the impacts of excessive clothing and textile consumption and disposal while promoting sustainable alternatives, supporting textile recycling drop-off days and promoting the implementation of the 'Seamless' product stewardship program for clothing.

WR1.3 Advocating for a sustainable weekly green bin collection service: Continuing to advocate for and investigate options for a sustainable weekly green bin collection service.

WR1.4 Electronic waste recycling education and promotion: Providing additional community education about electronic waste types and disposal options and promote drop-off days.

WR1.5 Raising awareness and improving recycling: Expand online campaigns and partner with SRWRA, Green Industries SA and our waste service providers to educate residents and businesses on correct recycling practices, reduce contamination, and promote waste reduction.

WR1.6 Enabling community action and collaboration: Provide resources and support for community groups and event organisers to facilitate community education and engagement - such as performance or visual art - to reduce waste at local events and foster sustainable waste management practices.



Priority WR3

Support circular businesses and product stewardship

● Objectives

- **WR3a** Partner with waste service providers to improve materials recovery and appropriate disposal.
- **WR3b** Advocate for improved recycling facilities and local processing of soft plastic products and materials.
- **WR3c** Support local businesses with waste reduction and circular economy practices.
- **WR3d** Advocate for Federal and State Government leadership on mandatory product stewardship schemes for handling problematic waste streams.



● New activities

The following new activities will be undertaken over the course of this plan in addition to our current activities:

WR3.1 Repurposing hard waste:

Investigate options and partnerships for recycling and repurposing good quality products and materials from hard waste e.g. tip shop, collection service.

WR3.2 Supporting solutions to hazardous waste, batteries and electronic waste:

New focus on advocating for all electronic waste and solar panels

to be included in the mandatory product stewardship scheme for televisions and computers and further develop partnerships with the State Government and private providers to support improved access to recycling and disposal options for hazardous wastes and electronic waste.



Priority WR4

Prevention of litter and pollution

Objectives

- **WR4a** Promote pollution prevention and cleanup in the community.
- **WR4b** Minimise and manage illegal dumping and public place littering.



New activities

The following new activities will be undertaken over the course of this plan in addition to our current activities:

WR4.1 Trial waste separation in public places: Explore and implement trials for separating waste and recyclables in public spaces.

WR4.2 Support phasing out single-use plastics: Focus on advocacy to support State and Federal Government policies and bans to reduce unnecessary single-use plastic packaging from entering the environment as litter and microplastics and to remove non-recyclable waste items from circulation.

WR4.3 Support regulation to phase out Perfluoroalkyl and Polyfluoroalkyl Substances (PFAS): Support the national regulatory approach to phase out PFAS from packaging - particularly compostable packaging - due to the potential contamination in council green waste streams and potential impacts on human health and the environment.



Theme 4:

Climate resilience and reducing emissions

Background



The global climate is changing, with the severity of impacts projected to increase significantly due to past, current, and future greenhouse gas emissions driven by industrial human activity. Globally and locally, climate change is expected to have widespread adverse impacts on the environment, human health, economic stability, and social wellbeing. Community demands and compliance measures are continuing to grow in this space.

Climate change will have far-reaching impacts on our planet, communities, and future generations. We recognise that urgent climate action is needed this decade and are committed to taking decisive action. The impacts of climate change on the City of Marion are projected to be significant, requiring urgent and proactive measures to build resilience and reduce risk.

We recognise that urgent climate action is needed this decade and are committed to taking decisive action.

Climate resilience and reducing emissions



Climate impacts

Our region has already become hotter and drier with more variable and extreme weather and these trends are projected to continue. Key climate variables and associated hazards that will impact our city now and increasingly into the future are:

- **Increased heat:** Higher average temperatures and more frequent and intense heatwaves will impact the health of our natural environment, community, assets, services and workforce. It will also result in more dangerous fire conditions.
- **Reduced annual rainfall:** Average annual rainfall will decline and more time will be spent in drought. This places stress on our trees, parklands biodiversity and agriculture.
- **Increased rainfall intensity and storms:** Despite an overall decrease in rainfall, the number and intensity of heavy rainfall events and storms will increase. This places stress on our stormwater systems and can increase risks of flooding.
- **Sea level rise and oceanic change:** Sea levels will continue to rise along with increases in storm surges, increases in ocean temperatures and changed ocean conditions. This will increase coastal erosion and will impact coastal ecology.

Significantly reducing our greenhouse gas emissions, understanding climate risks and proactive climate adaptation planning are crucial for limiting the climate impacts on our organisation and the wider community.



Climate resilience and reducing emissions



Image credit: Trim Photography

Climate reporting

Under carbon accounting standards like the Greenhouse Gas (GHG) Protocol Corporate Accounting and Reporting Standard, greenhouse gas emissions are classified into three categories or scopes.

These categories help us understand the full impact of our operations and identify opportunities to reduce emissions across all areas of influence.

Scope 1: Emissions released directly from council-owned or controlled sources, such as council vehicles, buildings, and facilities e.g. natural gas, fleet fuel, refrigerants.

Scope 2: Emissions from the generation of electricity that the council purchases and uses in its operations e.g. electricity for facilities and streetlights.

Scope 3: Emissions resulting from activities outside of council's direct ownership or control, but which we influence indirectly through our supply chain.

To track our progress in reducing corporate greenhouse gas emissions, we will use data from the 2022/23 financial year as our baseline. Our approach will align with the LGA industry guidelines and the GHG Protocol Corporate Accounting and Reporting Standard.



Climate resilience and reducing emissions



Appendix 1 summarises our baseline emissions profile. An annual inventory will review our emissions boundary to maintain alignment with GHG accounting standards, with findings published in a public climate report.

Mandatory climate-related financial disclosure requirements are being phased in by the Federal Government from 2025 under the *Corporations Act 2001*. These align with international standards, including those set by the International Sustainability Standards Board, and include requirements for emissions accounting and disclosure.

While these reporting obligations do not yet apply to councils, similar requirements are likely to emerge in the near future. In the interim, there is growing pressure for councils to support climate-related reporting by suppliers, partners, and other tiers of government. Climate reporting is already considered best practice and is being adopted by most South Australian metropolitan councils. It also supports access to external funding through Federal Government energy efficiency funding programs.



Our role

We are committed to leading by example in addressing climate change and supporting a just transition to a sustainable, low-carbon future. Our role involves both reducing emissions from our operations and helping our community and environment adapt to the impacts of a changing climate.

We will embed climate change considerations across all areas of governance, service delivery and operations. This includes reducing corporate greenhouse gas emissions, prioritising actions within our direct control, and working to improve the resilience of council services and infrastructure. For emissions outside our direct control—such as those in our supply chain—we will use our purchasing power to encourage low-carbon practices and seek opportunities to support innovation in sustainable materials and technologies.

We will proactively identify, manage and disclose climate-related risks to our operations in line with international best practice. At the same time, we will continue to support our community to reduce their emissions and adapt to climate impacts through targeted programs, information, and services.

Collaboration is central to our climate response. This includes continuing to work with our regional partners, through the Resilient South Regional Climate Partnership, and with State and Federal Government agencies, to strengthen community resilience and advocate for policy and investment that enables a low-carbon, climate resilient economy.





Strategic alignment and targets

This theme aligns with the following priorities in our Strategic Plan:

- O4.1** Manage our resources in a financially sustainable way and make provision in council's Long-Term Financial Plan to continually support and ensure uninterrupted council services.
- L1.1** Develop innovative active transport pathways and safe crossing points to key amenities that connect roads, footpaths and public transport.
- L2.1** Use sustainable and Universal Design Principles, smart technology, and codesign to enhance accessibility.
- L4.1** Advocate to the community on the benefits of environmentally sustainable design in buildings.
- L4.2** Council infrastructure is assessed for climate risks and actions are taken to embed and improve resilience.
- S1.6** Manage our coastal environment and respond to the impacts of sea level rise, climate and storm surge.
- S3.1** Build resilience to climate change by managing the impacts and risks.
- S3.2** Support the community's carbon emission reduction through investing and/or partnering in infrastructure, such as electric vehicle recharge stations.

Alignment with state and national targets

We are committed to supporting global, national and international efforts to combat climate change by reducing greenhouse gas emissions.

We recognise the importance of coordinated action at all levels and align our efforts with the South Australian Government and the Federal Government, which have set short term emissions reduction targets and targets to achieve net zero emissions by 2050.

Reduce net greenhouse gas emissions by at least 60% by 2030 (from 2005 levels)³¹

Achieve 100% net renewable electricity generation by 2027³³

Achieve net zero emissions by 2050³²





Targets for council operations

These targets will measure our progress towards reducing emissions and increasing climate resilience.



1. Reduce corporate greenhouse gas emissions by **50%** by 2035 (from 2022/23 baseline)

2. Replace our light fleet vehicles with EVs by **2028**

3. Purchase **100%** renewable energy

4. Phase out use of gas at all council buildings and facilities by **2035** - replacing each unit with an electric alternative when it reaches the end of its useful life

Stretch target for council operations

1. Achieve net zero corporate emissions by 2050 (from 2022/23 baseline.)

2. Rooftop solar on all City of Marion owned buildings - including leased facilities - by 2030

3. All residual risks in the City of Marion climate risk register are 'medium' or lower by 2030⁴⁰

Community and environmental indicators and goals

These indicators, industry trends and community aspirations are outside of council control, however they will be monitored to help inform our future programs and funding priorities. Each indicator is accompanied by a preferred trend direction and data sources. The trend direction is based on past community feedback or existing government directions.

- Decrease greenhouse gases in the atmosphere.³⁴
- Decrease community greenhouse gas emissions in the City of Marion.³⁵
- Increase the uptake of rooftop solar and batteries by households and businesses.³⁶
- Increase replacement of fossil-fuel appliances with electrical appliances for households and businesses.³⁷
- Avoid public health incidents associated with extreme heat e.g. mortality rate.
- Avoid impacts to community infrastructure during flood, storms or bushfires.³⁸
- Avoid negative impacts to local economy due to climate change.³⁹





Current activities

✓ Emissions inventory and reporting

We maintain a greenhouse gas inventory and report annually on our progress toward reducing emissions.

✓ Solar on council buildings

We have installed solar panels on over 12 council buildings to help power our operations with renewable energy.

✓ Environmentally Sustainable Design (ESD)

Our ESD guidelines aim to incorporate ESD principles into new council buildings and major projects to help improve environmental outcomes and reduced embodied emissions.

✓ Renewable electricity

Since 2023, we have sourced 100% renewable electricity, either through Green Power or a Power Purchase Agreement, to power our operations.

✓ Energy-efficient LED streetlighting

We have upgraded over three-quarters of the streetlights across the city to energy-efficient LED lighting, which has significantly reduced energy consumption.

✓ Optimising the transition of light passenger fleet to electric vehicles (EVs)

Continuing to optimise and future-proof vehicle replacements ensuring all fleet vehicles are fit for purpose, develop electric vehicle (EV) charging infrastructure.

✓ Public EV charging infrastructure

Encouraging electric vehicle charging infrastructure for our community to support increased uptake of electric vehicles, including provision of public EV chargers at various council facilities.





✓ Resilient South Regional Climate Partnership

Collaborating with neighbouring councils and State Government to deliver the Resilient South Regional Climate Action Plan 2024–2029.

✓ Resilient assets

Ensuring that our assets are resilient to future climate impacts by working with partners on initiatives like the Resilient Asset Management Program.

✓ Promoting home energy efficiency

Supporting residents to improve home energy efficiency by promoting resources and guidance and toolkits on creating all-electric, energy-efficient homes.

✓ Support for community uptake of renewable energy and storage

Providing support for community efforts to adopt renewable energy and storage solutions.

✓ Sustainable transport options

Supporting active transport through developing safe walking and cycling routes and advocating for zero-emissions public transport.

✓ Foster a sustainable and resilient community

Encourage community initiatives that reduce emissions and create a more climate-resilient local community.

✓ Support local businesses in sustainability efforts

We help businesses secure funding for sustainability and emissions reduction initiatives and prepare for climate change by providing training and capacity-building events e.g. Future Energy Week.



✓ Coastal planning

Monitoring and planning for coastal climate hazards, ensuring that our coastline is resilient to the impacts of climate change.

✓ Storm preparation and response

Preventing and managing impacts to the community before and after storms.

✓ Advocate for development policies that support local climate resilience

Advocating for State Government planning policy and improved building standards that support low-emission, energy-efficient, and climate-resilient developments.

✓ Sustainable housing developments

Develop design guidelines for residents and developers to promote sustainable housing and its benefits.



Priority C1

Reduce greenhouse gas emissions from our operations

● Objectives

- **C1a** Track our emissions in line with best practice approaches for emissions inventories.
- **C1b** Maximise renewable energy generation and storage and purchase renewable energy.
- **C1c** Transition to a low-emission fleet.
- **C1d** Transition to low-emission buildings and assets.
- **C1e** Seek innovative solutions to improve efficiency of public lighting including consideration of reduced lighting times.
- **C1f**: Assess council owned facilities for battery storage and integrate where practical and feasible.

● New activities

The following new activities will be undertaken over the course of this plan in addition to our current activities:

C1.1 Produce an annual climate report: Prepare a climate report each year, detailing the greenhouse gas emissions associated with our operations, and make it publicly available on our website.

C1.2 Review ESD Guidelines: Review the City of Marion ESD guidelines for buildings and embed these principles into our enterprise project management system.

C1.3 Improve energy efficiency of Marion Water: Monitor opportunities to improve the energy efficiency of Marion Water and power Marion Water pumping operations with renewable energy.

C1.4 Management systems for rooftop solar: Review the management and maintenance of solar PV systems to ensure efficiency and maximum output in line with council's asset management framework.

C1.5 Refrigerants in air conditioning systems: Transition to low Global Warming Potential (GWP) refrigerants used on new builds and as part of asset replacement programs aiming for refrigerants with GWP <10.

C1.6 Electric vehicle fleet: Monitor emerging low-emission technologies for medium and heavy vehicles and seek opportunities to trial these innovations.



Priority C2

Reduce emissions in our supply chain

● Objectives

- **C2a** Strengthen data collection and reporting processes for emissions across the supply chain.
- **C2b** Integrate environmental sustainability and low-emissions criteria into procurement practices in alignment with emerging LGA standards and advocate for additional LGA support where required.
- **C2d** Encourage suppliers to lower the emissions associated with the goods and services they provide.



● New activities

The following new activities will be undertaken over the course of this plan in addition to our current activities:

C2.1 Sustainable procurement policies and procedures: Review policies and procedures to embed sustainability, ensuring selection processes give weighting to suppliers with sustainable commitments or credentials.

C2.2 Increase staff awareness of sustainability across the supply chain: Increase engagement with employees across the organisation to promote understanding and adoption of sustainable procurement practices.



Priority C3

Support our community to reduce their emissions

● Objectives

- **C3a** Support our community to transition to all-electric homes powered by renewable energy.
- **C3b** Provide infrastructure and programs to increase sustainable and active transport modes.
- **C3c** Support local businesses to reduce their emissions.



● New activities

The following new activities will be undertaken over the course of this plan in addition to our current activities:

C3.1 Promote sustainable transport options: Support active transport through developing safe walking and cycling routes and advocating for zero-emissions public transport.

C3.2 All electric homes: Look for further new opportunities to promote the Electrify Everything community campaign encouraging households to transition away from fuel combustion – including wood, gas and oil - to all-electric homes.

C3.3. Solar and energy efficiency for renters: Advocate to the State Government to incentivise landlords and tenants to install solar and improve the energy efficiency of rental properties.



Priority C4

Build our organisation's resilience to climate change

● Objectives

- **C4a** Build and manage our assets to ensure resilience to climate change including heat, storms, flooding and bushfires.
- **C4b** Deliver services that are resilient to climate impacts.
- **C4c** Build staff capacity to understand and respond to climate change.
- **C4d** Strengthen climate governance and embed climate resilience across the organisation.
- **C4e** Identify and publicly disclose our climate risks and manage how they impact on our organisation.

● New activities

The following new activities will be undertaken over the course of this plan in addition to our current activities:

C4.1 Climate modelling: Work with Resilient South partners to increase the use and understanding of locally relevant climate modelling to understand climate impacts to our organisation and community (with a preference for NarClim models⁴¹ and data provided by the State Government).

C4.2. Climate hazard mapping: Advocate for and increase accessibility of climate hazard mapping to assist with informed decision-making to mitigate climate risk.

C4.3 Climate risk: Maintain and develop our climate risk register to ensure we proactively respond to climate change hazards and impacts.

C4.4 Climate training and awareness: Deliver new training to build climate literacy and awareness among staff and Council members, supporting a knowledgeable workforce and organisation that can contribute to climate action in all aspects of our business.

C4.5 Support staff in extreme heat and other climate events: Increase our focus on how heatwaves, extreme weather events and bushfires might impact the health and wellbeing of our workforce.

C4.6 Integrate climate considerations in project management: Find new ways to embed climate considerations into all phases of council projects through our enterprise project management system.

C4.7 Climate scenario planning: Increase the use of scenario planning with staff and other stakeholders – such as the Southern Region Zone Emergency Management Committee - to conduct incident planning exercises for extreme events and other climate-related risks.



Priority C5

Foster community resilience to climate change

● Objectives

- **C5a** Raise community awareness about local climate impacts, risks and opportunities.
- **C5b** Encourage climate-resilient resilient low-emissions development.
- **C5c** Assist the community to avoid or prepare for climate change risks.
- **C5d** Assist the community - including those outside our region - in responding and recovering from climate change related emergencies.



● New activities

The following new activities will be undertaken over the course of this plan in addition to our current activities:

C5.1 Increase urban heat awareness and safety: Raise awareness of urban heat risks and provide information on safety measures, cool spaces, and support services available to the community.

C5.2 Support vulnerable communities during extreme heat: Implement educational initiatives and proactive strategies, such as checking on vulnerable residents during extreme heat, to support community wellbeing during heatwaves through the Positive Ageing and Inclusion Program.

C5.3 Promote climate-resilient housing: Share new education materials on climate-resilient housing solutions.

C5.4 Climate hazard mapping: through Resilient South, share new local information on climate hazards that are relevant to our community.



Theme 5:

Sustainable living and environmental engagement



Background

We are dedicated to creating a future where sustainable living is embedded in the everyday lives of our community. Sustainable living means making choices that have a minimal impact on the environment - using water wisely, minimising waste, reducing emissions, and choosing sustainable, locally produced food.

We will work to empower residents, businesses, and visitors to adopt environmentally responsible practices, fostering a deep connection between people and nature.

By encouraging sustainable choices, we aim to reduce our collective impact on the natural world while enhancing the liveability of our city.

Sustainable living and environmental engagement



Through targeted programs, educational initiatives, and collaborative partnerships, we aim to build a community that actively participates in the protection and enhancement of our local environment. Together, we will create a city that leads by example, where environmental engagement is at the core of our actions.

In the 2025 community satisfaction survey, only 45% of respondents were satisfied with opportunities to learn about the natural environment. The high proportion of neutral (35%) and “don’t know” (11%) responses suggest limited awareness of existing opportunities, highlighting a chance for council to improve communication and promote local environmental engagement initiatives.

The health of our environment and the wellbeing of our community are deeply interconnected. Strengthening connection to nature plays a vital role in promoting physical and mental health by encouraging active lifestyles, reducing stress, and improving mental health outcomes. Access to nature and local green spaces supports improved health outcomes, stronger social connections and helps build a sense of local identity and belonging. Creating opportunities for people to engage with nature in their everyday lives contributes to more resilient, inclusive, and liveable communities.



Our role

We have built strong ongoing relationships with diverse partners to engage our community on environmental matters and encourage sustainable living practices. We aim to empower individuals in our community to make informed choices that reduce their environmental impact while fostering a deep connection to nature within the local area. We will raise awareness of key environmental issues, build local knowledge, and enhance community capacity to contribute to sustainability efforts.

We aim to provide accessible information about sustainable living and create opportunities for individuals and groups to get involved in a range of environmental initiatives. We will keep the community updated on the progress of our environmental actions as an organisation, ensuring transparency and collaboration.





Strategic alignment and targets

This theme aligns with the following priorities in our Strategic Plan:

- S2.2** Provide opportunities for the community to connect with nature, learn about our natural environments and promote innovative and sustainable living.
- S2.3** Explore partnerships with Aboriginal and Torres Strait Islander People to learn and share traditional land management practices.
- S2.4** Promote a sustainable urban environment by supporting community gardens.
- S3.2** Support the community's carbon emission reduction through investing and/or partnering in infrastructure, such as electric vehicle recharge stations.
- L4.1** Advocate to the community on the benefits of environmentally sustainable design in buildings.

Targets for council operations

These targets will measure our progress with engaging our community on environmental matters.

1. Maintain a Green Thymes newsletter click-rate average of **10%**

2. Reach at least **1000** households each year through direct mailouts with opportunities to get involved in environmental programs

3. Increase community awareness of council environmental programs in the **community satisfaction survey**



Community and environmental indicators and goals

- Attitudes towards the environment and nature.⁴²
- Increase participation in citizen science platforms.⁴³
- Increase use of public transport.⁴⁴
- Accessibility of community gardens across the council area.
- Positive attendance at sustainability themed council events.⁴⁵
- Positive engagement with sustainability themed digital media content.⁴⁶
- Number of community-led environmental projects per year.⁴⁷





Current activities

✓ Environmental events and workshops

We host events focused on sustainability actions at home and in the local area, with a focus on topics like saving energy, food gardening, reducing waste, sustainable food and wildlife-friendly gardening.

✓ Green Thymes e-newsletter

Providing a regular e-newsletter that keeps the community informed about local environmental initiatives and opportunities to engage with nature.

✓ Community garden support

Ongoing support, promotion, and capacity building for both established and new community gardens on council-owned land.

✓ Common Thread sustainability workshops

Running series of sustainability workshops designed to inspire action, encourage community connection and educate about key sustainable living topics.



✓ Digital environmental communications

Keeping our community informed and connected to local environmental efforts through use of social media, our website, and e-newsletters such as Green Thymes.

✓ Citizen science initiatives

Promoting and facilitating local involvement in citizen science programs such as CoastSnap, Aussie Backyard Bird Count, Frog Watch, and Reef Watch.

✓ Environment Report Card

Providing an annual overview highlighting our environmental achievements, progress, and partnerships.

✓ Promoting council environmental initiatives

Through various publications and digital channels, we actively promote council-led environmental programs focusing on climate, waste management, water conservation, and greening efforts.



Sustainable living and environmental engagement



✓ Create engaging nature experiences

Developing events and activities that offer opportunities for the community to connect with nature and learn about the local environment.

✓ Green Adelaide Education Program

Supporting nature stewardship and environmental leadership in schools through collaboration with Green Adelaide.

✓ Nature play in open spaces

Integrating nature-based play principles into the design of playgrounds, reserves, and open spaces to encourage young people to connect with nature.

✓ Encourage community gardening participation

Promoting existing community gardens and inspiring residents to get involved in local gardening initiatives for a stronger, more sustainable community.

✓ Foster food gardening skills

Delivering educational workshops and resources to empower residents with the knowledge and skills to grow their own food sustainably.

✓ Encourage community engagement with environmental groups

Promoting local environmental organisations to inspire wider community participation in sustainability efforts.

✓ Celebrate environmental leadership

Sharing stories of local environmental champions through case studies and events to highlight and inspire sustainable practices within the community.



Priority E1

Foster sustainable communities

● Objectives

- **E1a** Deliver education and engagement programs that increase awareness of sustainable living in our community.
- **E1b** Remove barriers and provide incentives to encourage positive behaviour change towards sustainable living practices.
- **E1c** Enhance partnerships and networks with community to support collective action.

● New activities

The following new activities will be undertaken over the course of this plan in addition to our current activities:

E1.1 Foster inclusive sustainable living education: Find new opportunities to partner with community service organisations to deliver sustainable living education and programs that support people on low incomes.

E1.2 Engage in regional sustainability initiatives: Participate in regional behaviour change programs in partnership with organisations across the Adelaide region to promote sustainable living practices on a broader scale.

E1.3 Promote sustainable home design: Work with local partners to raise awareness and encourage environmentally sustainable practices in home and renovation design, contributing to greener communities.

E1.4 Partner with conservation leaders to encourage native gardening: Work with leaders from local Friends groups to support native home gardening through tailored advice.

E1.5 Collaborate with libraries and community centres to deliver sustainable living education: Find new opportunities to work together to provide accessible community projects and programs that foster sustainable living, raise awareness of key environmental issues, build local knowledge, and promote environmental services.



Priority E2

Connect our community with nature

● Objectives

- **E2a** Enhance community engagement with nature.
- **E2b** Promote community understanding of our unique natural environment, local biodiversity and its cultural significance.
- **E2c** Provide children and young people with meaningful opportunities for nature connection, fostering lifelong environmental stewardship.



● New activities

The following new activities will be undertaken over the course of this plan in addition to our current activities:

E2.1 Foster a deeper connection with nature: Promote citizen science platforms like iNaturalist to enhance community engagement and understanding of local plants and animals.

E2.2 Incorporate nature into public art: Incorporate public art and placemaking initiatives to serve as platforms for environmental education, ecological literacy, community engagement, and stewardship.

E2.3 Encourage creative nature initiatives: Introduce innovative programs that go beyond traditional nature activities, bringing people together and fostering a shared appreciation for the environment.



Priority E3

Support community gardening and sustainable food systems

● Objectives

- **E3a** Support existing community garden groups and foster the development of new community gardens.
- **E3b** Support local food gardening and sharing of local produce to build a sustainable local food system.



● New activities

The following new activities will be undertaken over the course of this plan in addition to our current activities:

E3.1 Support local food-sharing initiatives: Find new ways to foster and facilitate community-based produce swaps and seed libraries to encourage the exchange of homegrown food.

E3.2 Locally sourced and sustainable food in council operations: Support sustainable food systems by offering locally sourced and environmentally sustainable food options at council events and services.



Priority E4

Support and promote community leadership in sustainability

● Objectives

- **E4a** Support the development of diverse and inclusive environmental groups and local champions.
- **E4b** Build community capacity to deliver and innovate on local environmental projects and initiatives.
- **E4c** Amplify community impact through sharing and showcasing achievements and local stories.
- **E4d** Create pathways for youth leadership through collaboration with schools and youth-led initiatives.



● New activities

The following new activities will be undertaken over the course of this plan in addition to our current activities:

E4.1 Foster local sustainability initiatives: Support the formation of new neighbourhood groups to collaborate on local sustainability projects, such as the 'In Our Street' initiative, to drive positive environmental change.

E4.2 Empower environmental leaders: Find new opportunities to build the capacity of environmental champions through leadership programs like Living Smart and the City of Marion Community Leadership Program to nurture local sustainability advocates.

E4.3 Support community-driven environmental projects: Proactively engage with the community to encourage innovative environmental project proposals to be put forward for funding through our Community Grants opportunities.



Definitions

Term	Definition
Biodiversity	The diversity of living organisms in a particular location. The term is particularly used for species that are endemic ('native') to a location and have evolved over time to exist in that area as part of an ecosystem.
Biodiversity Sensitive Urban Design	An approach to the planning and design of urban environments focussed on improving biodiversity and ecosystem health.
Circular economy	An alternative to the wasteful traditional 'linear' economy based on 'take, make, use and dispose' based on the principles of designing out waste and pollution, keeping products and materials in use at their highest utility for as long as possible and regenerating natural systems.
Carbon Dioxide equivalent (CO2e)	A standardised measure used to compare the emissions from various greenhouse gases (GHG) based upon their global warming potential.
Citizen science	Citizen science is the practice of engaging the public in scientific research, where volunteers contribute data collection, analysis, or other activities, often in collaboration with professional scientists, to advance knowledge in various fields
Climate resilience	The ability of a feature or system to prepare for, recover from and adapt to the impacts of climate change while retaining the same basic structure and ways of functioning. Climate resilience requires an integrated and collaborative approach that considers climate risk reduction, emissions reduction and adaptation.
Climate hazard	Climate hazards are specific physical events or trends driven by changes in climate variables that pose a threat to people, infrastructure, or ecosystems e.g. heatwaves, bushfires, flooding, drought, coastal erosion.
Climate risk	<p>Climate risks are the potential impacts that arise from climate change. Climate risks can be broadly categorised as:</p> <p>Physical risks: These are assessed by considering exposure and vulnerability to a climate hazard e.g. damage to a council asset from flooding.</p> <p>Transition risks: These are assessed by considering impacts of climate-related policy, regulation, technology, markets or community expectations and looking at financial, reputational or legal consequences e.g. how council responds to emissions reduction</p>

Term	Definition
Community garden	Community gardens are community led and managed, not-for profit initiatives, where members of the local community come together to grow food in individual or shared plots. Community gardens are open to the public on a regular basis.
Emissions	Emissions refers to greenhouse gas emissions released into the atmosphere primarily due to human activities, such as the burning of fossil fuels (coal, oil, and natural gas), agriculture, and land clearing.
Emissions inventory	An account of the amount of greenhouse gas (GHG) emissions emitted to the atmosphere. The emissions inventory must account for the six GHGs covered by the Kyoto Protocol.
Embodied emissions	Emissions associated with the production, transportation and disposal of materials used in construction, manufacturing and other processes.
Environmental sustainability	Planning and providing for the needs of current and future generations, creating resilient and prosperous communities and protecting the environment and ecosystem services.
Environmentally Sustainable Design	Environmentally Sustainable Design (ESD) is the practice of creating buildings and spaces that minimise environmental impact and use resources efficiently. Key principles of ESD are passive design, energy efficiency and low emissions, water conservation, sustainable materials, supporting health and wellbeing of occupants and climate resilience. ESD aims to deliver long-term benefits by integrating sustainability into all stages of a project's life cycle.
Future Trees	Future Trees is a Resilient South and University of Adelaide project focused on increasing urban tree diversity through data sharing, trialling new species and developing new cultivars resilient to more challenging climates: resilientsouth.com/futuretrees .
Green infrastructure / natural assets	'Green infrastructure' and 'natural assets' are similar terms that refer to living systems or items that are engineered and managed to achieve defined environmental, social and economic outcomes. Examples could be trees, forests or wetlands in an urban setting.
Greenhouse gases (GHG)	Greenhouse gas emissions are the atmospheric gases responsible for causing global warming and climate change. Greenhouse gases include: carbon dioxide (CO ₂), methane (CH ₄), nitrous oxide (N ₂ O), hydrofluorocarbons (HFCs), perfluorocarbons (PFCs), sulphur hexafluoride (SF ₆) and nitrogen trifluoride (NF ₃)

Term	Definition
Greening	Conservation, restoration, or creation of green infrastructure including trees and vegetation, that benefits people, nature and our economy, and the soils and water to support it.
Hazardous waste	Selected solid waste items, as specified by Council, which arise from residential premises that cannot be collected by the general waste, co-mingled, organics recycling or hard waste collection services.
Natural Asset Management	Natural Asset Management is a particular field of asset management that deals with the systemic management of natural assets. It follows similar approaches to traditional asset management (roads, bridges etc) based on the delivery of defined service levels in the most cost-effective way.
Net Zero emissions	Net zero emissions means that any remaining greenhouse gas emissions, after emissions are reduced, are balanced out by removal of an equivalent amount of carbon through emissions reduction activities.
Product stewardship	Product stewardship is an approach to environmental management in which everyone involved in the lifecycle of a product—manufacturers, importers, retailers, users and disposers—takes shared responsibility for reducing the environmental and health impacts of that product. It aims to minimise waste, promote resource recovery and reduce the environmental impact of products, particularly at end-of-life, through measures such as improved design, reuse, recycling, and appropriate disposal.
Refrigerants	Refrigerants are synthetic greenhouse gases used in air conditioning and refrigeration. Their release through leaks or servicing is considered a scope 1 (direct) emission under emissions reporting frameworks and must be including in emissions inventories if material. Refrigerant emissions are calculated based on gas type and estimated leakage.
Regional Climate Partnerships	The Regional Climate Partnerships are a network of regional, cross-sectoral groups delivering practical action aimed at strengthening the climate resilience of their communities, economies, and natural and built environments. The City of Marion participates in the Resilient South Regional Climate Partnership.
Renewable energy	Renewable energy is generated from natural resources that are abundant and continually replenished, such as sunlight, wind, and biomass. These sources are considered renewable because they produce little or no greenhouse gas emissions during energy generation.
Resilient South	A Regional Climate Partnership for the Southern Adelaide Region including the Cities of Holdfast Bay, Marion, Mitcham and Onkaparinga and the South Australian Government.

Term	Definition
Supply chain	Supply chain refers to the series of activities involved in the production, distribution, and consumption of goods or services, focusing on minimising environmental impacts at each stage.
Sustainable living	Sustainable living refers to individuals or households making choices that have a minimal impact on the environment including using water wisely, minimising waste, reducing emissions, and choosing sustainable, locally produced food.
Water Sensitive Urban Design	An approach to the planning and design of urban environments focused on integrating the urban water cycle, including potable water, wastewater, and stormwater, with the built and natural urban landscape.

Appendix one – Emissions Inventory Summary

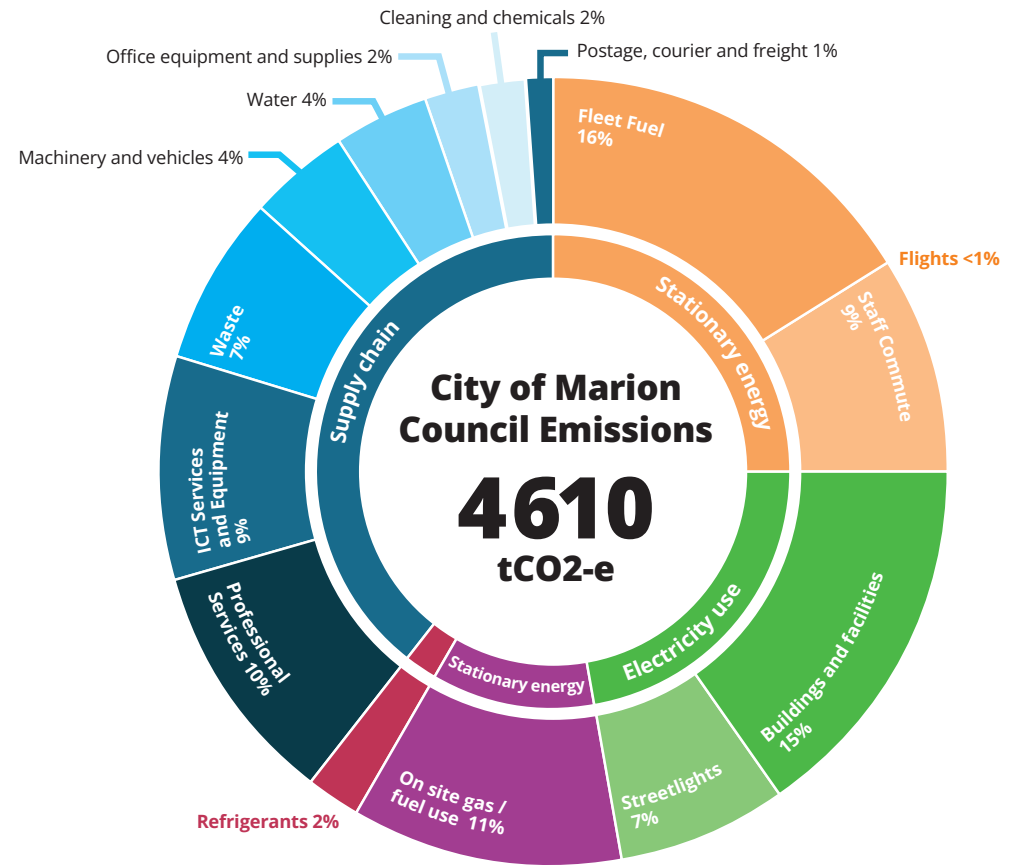
To track our progress in reducing corporate greenhouse gas emissions, we will use data from the 2022/23 financial year as our baseline. In this baseline year, our operations generated 4,610 tonnes of CO₂ equivalent.

This emissions profile was developed in accordance with the GHG Protocol Corporate Accounting and Reporting Standard, aligning with industry guidelines developed by the LGA⁴⁸. It includes all 'minimum practice' categories within the LGA guidelines along with all 'good practice' categories that contributed at least 2% of our profile in the 2022/23 financial year.

We will continue to refine our approach to measuring embodied emissions, with the aim of incorporating 'leading practice' categories into future emissions inventories.

It includes scope 1 and 2 emissions - fleet fuel, natural gas, refrigerants, electricity - along with the following scope 3 emissions categories:

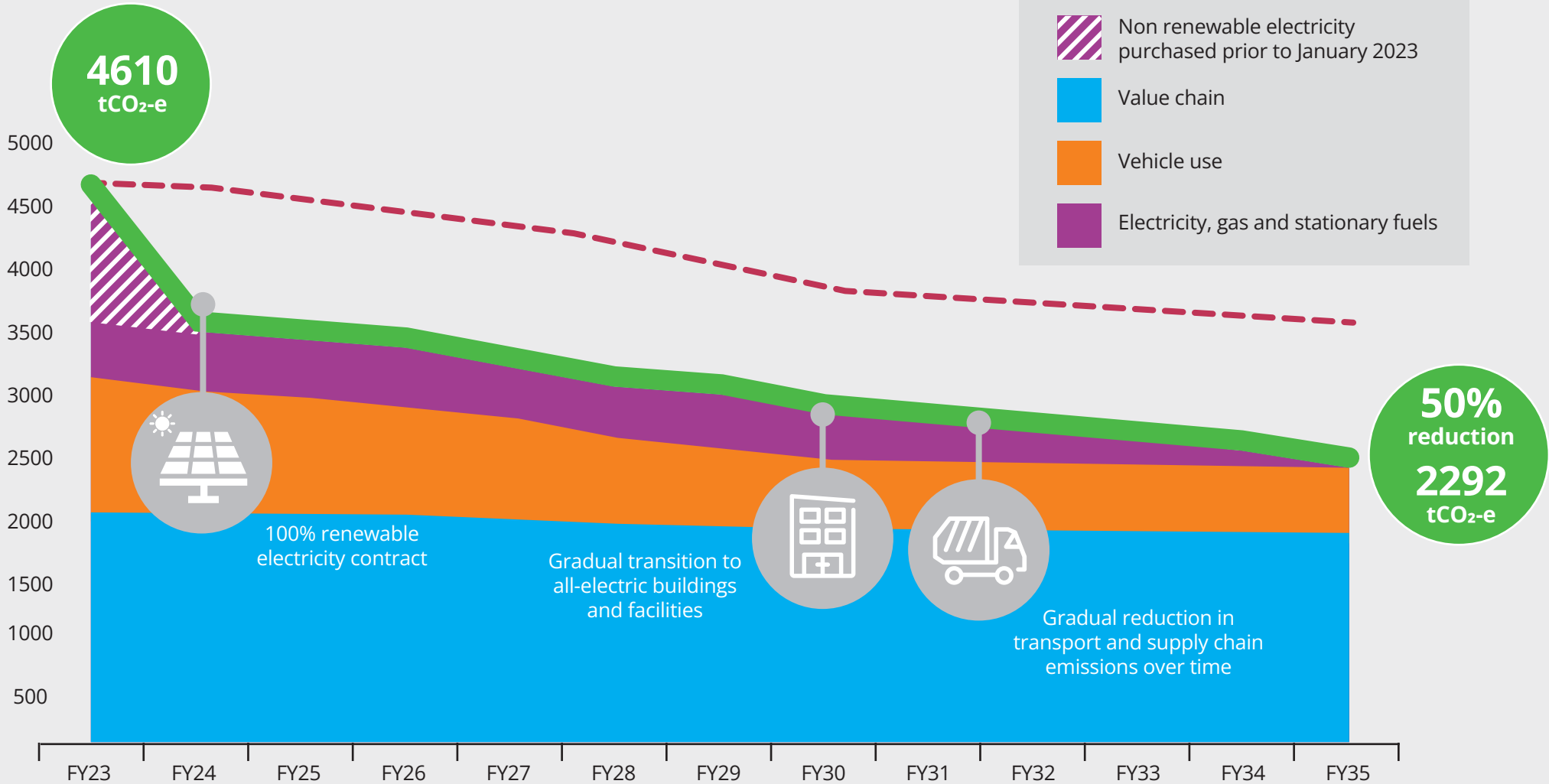
- Professional services
- ICT services and equipment
- Staff commute
- Waste to landfill
- Machinery and vehicles
- Water
- Office equipment and supplies including paper
- Cleaning and chemicals
- Postage, courier and freight
- Flights



The emissions categories listed on the right have been excluded from the emissions boundary either because they cannot be accurately measured at this time - such as embodied emissions in infrastructure - or because they contribute less than 2% to our total emissions profile.

- Construction materials and services
- Agriculture and horticulture (construction related)
- Roads and landscape
- Accommodation
- Working from home
- Food and catering

Emission reduction pathway



Endnotes

- 1 State Government target in the Urban Greening Strategy for Metropolitan Adelaide and Greater Adelaide Regional Plan 2025
- 2 Federal Government target in the Strategy for Nature 2024-2030
- 3 The South Australian Government's Biodiversity Bill 2025 proposes increased protections for biodiversity
- 4 As measured through before and after condition assessments (note this is not currently mandatory and may require additional funding)
- 5 As measured through condition assessments defined in the City of Marion Biodiversity Plan 2024-2029
- 6 Measured by remote sensing canopy and urban heat data
- 7 This target is aligned with Urban Greening Strategy for Metropolitan Adelaide and will require regular review based on seasonal conditions and available data
- 8 This target is based on the revegetation action in the City of Marion Biodiversity Plan 2024-2029 to plant 1500 local native plants annually
- 9 'Priority sites' are defined in the City of Marion Biodiversity Plan 2024-2029
- 10 Baseline in the IPCC 2002 Assessment Report
- 11 Baseline in the IPCC 2002 Assessment Report
- 12 Measured by SA Water reports
- 13 Measured by City of Marion and State Government reports
- 14 Measured by industry reports
- 15 Measured by City of Marion and State Government stormwater monitoring reports
- 16 Measured at State Government water quality monitoring stations
- 17 Measured by EPA and DEW reports
- 18 Measured by State Government marine condition monitoring reports
- 19 Measured by State Government and community marine debris reports and City of Marion gross pollutant traps cleaning reports
- 20 Measured by community monitoring reports at ausmap.org
- 21 Measured by SA Water reports
- 22 Standards accepted by lead agency responsible, e.g. EPA or Department for Environment and Water
- 23 In line with the new LGA – State Government Climate Ready Coasts Coastal Hazard Adaptation Guidelines
- 24 watersensitivesa.com
- 25 South Australian Government Target in Supporting the Circular Economy: South Australia's Waste Strategy 2020-2025
- 26 South Australian Government Target in Supporting the Circular Economy: South Australia's Waste Strategy 2020-2025
- 27 Federal Government Target in National Food Waste Strategy – Halving Australia's Food Waste by 2030
- 28 Federal Government Target in Australia's Circular Economy Framework: Doubling our circularity rate
- 29 Federal Government Target in National Waste Policy Action Plan 2024
- 30 Our largest unrecovered resources with a recycling rate below 50% include food organics, recyclable plastics and metals
- 31 South Australia's Net Zero Strategy 2024-2030
- 32 South Australia's Net Zero Strategy 2024-2030
- 33 South Australia's Net Zero Strategy 2024-2030
- 34 Measured by Intergovernmental Panel on Climate Change Reports
- 35 Measured by the Snapshot Community Climate Tool at snapshotclimate.com.au
- 36 Measured by household rooftop solar energy generation through Clean Energy Regulator
- 37 Measured by household rooftop solar energy generation through Clean Energy Regulator
- 38 Measured by City of Marion asset inspections
- 39 Measured through anecdotal reports from local businesses
- 40 Refer to City of Marion Risk Management Framework and City of Marion Climate Change Policy
- 41 The New South Wales and Australian Regional Climate Modelling project (NarClim) provides high resolution climate projections for South-eastern Australia to support climate adaptation and planning
- 42 Measured through independent surveys commissioned by Green Adelaide every 5 years
- 43 Includes citizen science platforms iNaturalist and Aussie Bird Count
- 44 Measured by Census travel to work data
- 45 Measured by council-led event evaluations
- 46 Measured by City of Marion social media campaign reports
- 47 Measured through community grants applications and known projects
- 48 Net Zero Accelerate - A best practice guide to emissions management for local government in SA, LGA South Australia

 8375 6600

 council@marion.sa.gov.au

 @CityofMarion

 @CityofMarion

 City of Marion

 marion.sa.gov.au

